




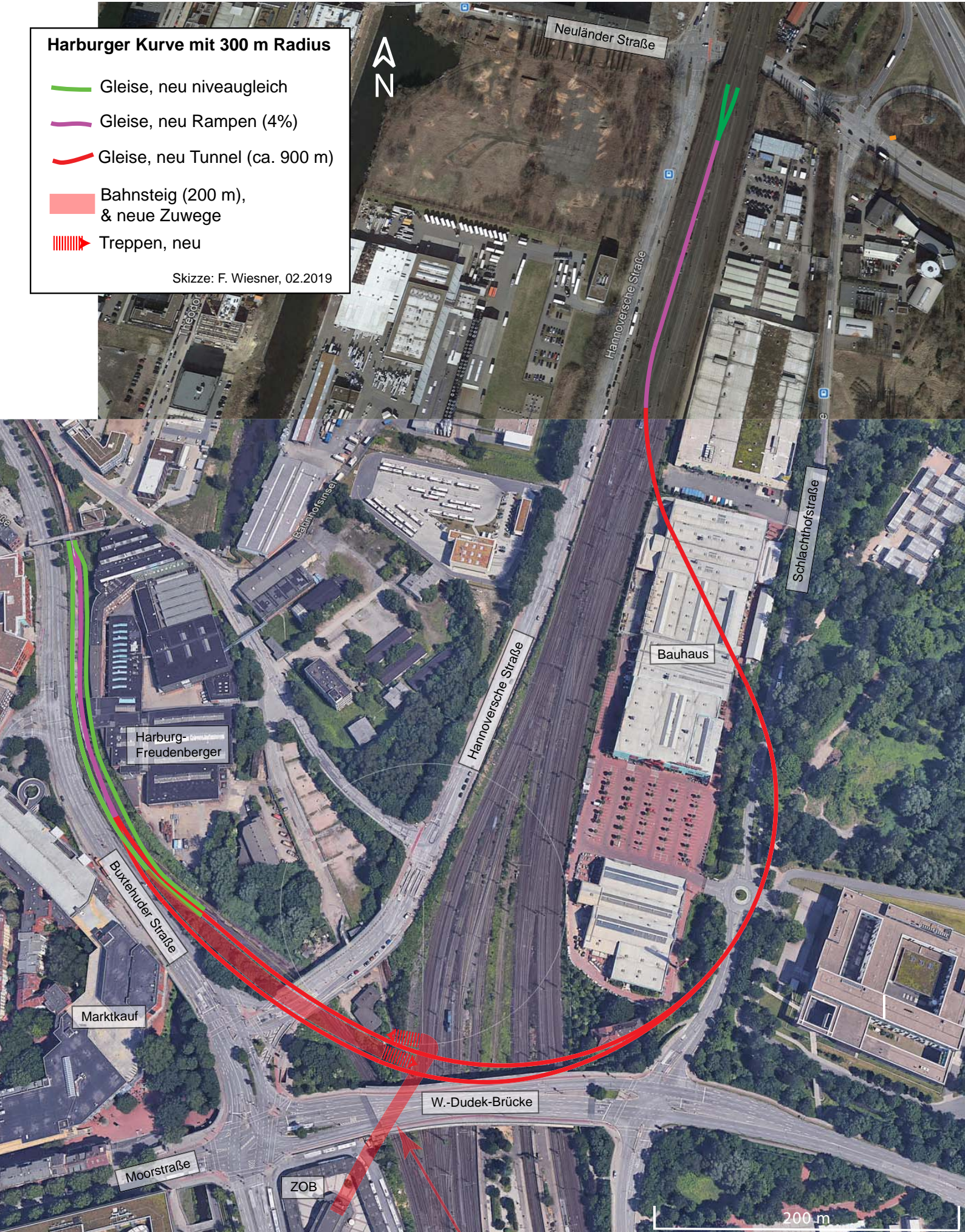


Harburger Kurve mit 300 m Radius

-  Gleise, neu niveaugleich
-  Gleise, neu Rampen (4%)
-  Gleise, neu Tunnel (ca. 900 m)
-  Bahnsteig (200 m), & neue Zuwege
-  Treppen, neu

Skizze: F. Wiesner, 02.2019



neuer Verbindungstunnel zwischen DB-Shop (gegenüber lange Rolltreppe), neuem Bahnsteig und in Richtung Binnenhafen